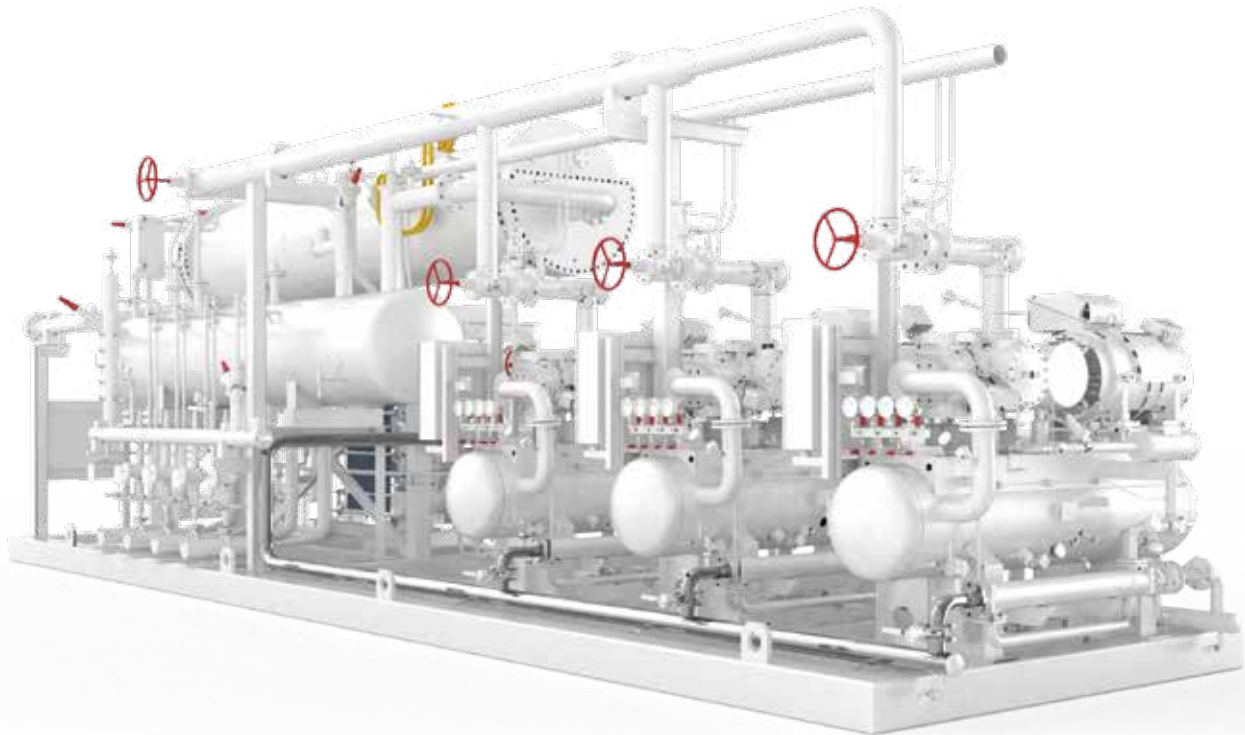




## WFC cascade system NH<sub>3</sub>/CO<sub>2</sub>

Custom cascade Refrigeration system  
for indoor use

Cooling capacity from 1500 kW to 5000 kW



Indoor  
installation



Screw  
compressors



Semihermetic  
reciprocating  
compressors



Natural  
Refrigerant



Natural  
Refrigerant

The NH<sub>3</sub>/CO<sub>2</sub> cascade system from Enex Industrial is ideal for very large industrial applications in food storage, food processing and blast freezing, providing outstanding efficiency especially in warm climates, with the capability to produce hot water through heat recovery.

## FEATURES

---

- 2 to 4 NH<sub>3</sub> screw compressors
- 2 to 6 CO<sub>2</sub> reciprocating compressors
- Multiple compressor brands available
- DX or pumped system
- Single or dual temperature level:
  - LT only
  - MT only (CO<sub>2</sub> as a heat transfer fluid)
  - LT + MT
- Water cooled, air cooled or evaporative condenser
- Electrical panel with industrial PLC

## OPTIONS

---

- NH<sub>3</sub>/CO<sub>2</sub> exchanger:
  - Shell & plate with integral NH<sub>3</sub> separator
  - Plate exchanger with separate NH<sub>3</sub> separator ("cathedral")
  - Spray evaporator
- Heat recovery on desuperheater, oil cooler and condenser
- Economizer
- High efficiency motor

## APPLICATION



Food storage



Food processing