



Ventilated Units



Cubic industrial unit cooler

- Cooling capacity from 6 kW to 260 kW



Dual flow CO2 and brine unit coolers

- Cooling capacity from 2 kW to 20 kW

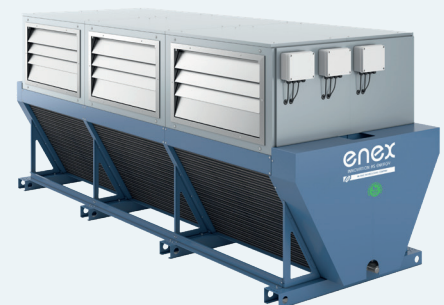


Flat gas coolers

- flat gas coolers with axial fans for outdoor use
- Cooling capacity from 15 kW to 900 kW

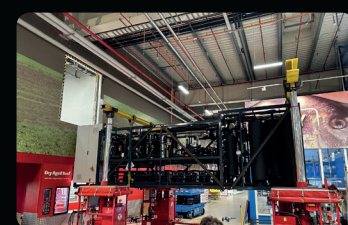
V-shaped gas coolers with centrifugal fans for indoor use

- Cooling capacity from 25 kW to 560 kW



Discover our All-in-One Solutions for Retail Application

Customer stories



POLAND
Installed unit
Elba - Refrigeration CO2 booster unit
Capacity
MT Load: 200 kW, LT Load: 32 kW

FRANCE
Installed unit
Senna- Refrigeration CO2 booster unit
Capacity
MT Load: 150 kW, LT Load: 30 kW, DHW



CO₂ Racks



Refrigeration booster unit

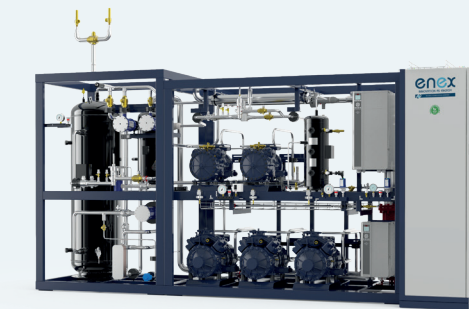
Senna

- Nominal cooling capacity from 90 kW to 410 kW in Medium Temperature
- Nominal cooling capacity from 4 kW to 200 kW in Low Temperature

Refrigeration booster unit

Elba

- Cooling capacity from 100 kW to 400 kW in Medium Temperature up to 950 kW for industrial version
- Cooling capacity from 35 kW to 200 kW in Low temperature up to 500 kW for industrial version



Refrigeration booster unit

Neva

- Nominal cooling capacity from 70 kW to 800 kW in Medium Temperature
- Nominal cooling capacity from 4 kW to 200 kW in Low Temperature

Refrigeration booster unit

Tago

- Cooling capacity from 10 kW to 40 kW in Medium Temperature
- Cooling capacity up to 8 kW in Low Temperature



Refrigeration booster unit

Drava

- Cooling capacity from 16 kW to 65 kW in Medium Temperature
- Cooling capacity from 12 kW to 23 kW in Low temperature



Modular packaged air-cooled reciprocating chiller and heat pumps 2 or 4 pipe

for outdoor installation
Everest RAE Kp, PAE Kp, GPE Kp Series

- Cooling capacity from 66 kW to 1120 kW
- Heating capacity from 80 kW to 1150 kW



High efficiency air to water 2 or 4 pipe heat pumps and multipurpose units

equipped with scroll compressor and axial fans with low gwp refrigerant

- Heating capacity from 22 kW to 450 kW

Air cooled heat pumps for outdoor installation

with semihermetic reciprocated compressors and axial fans

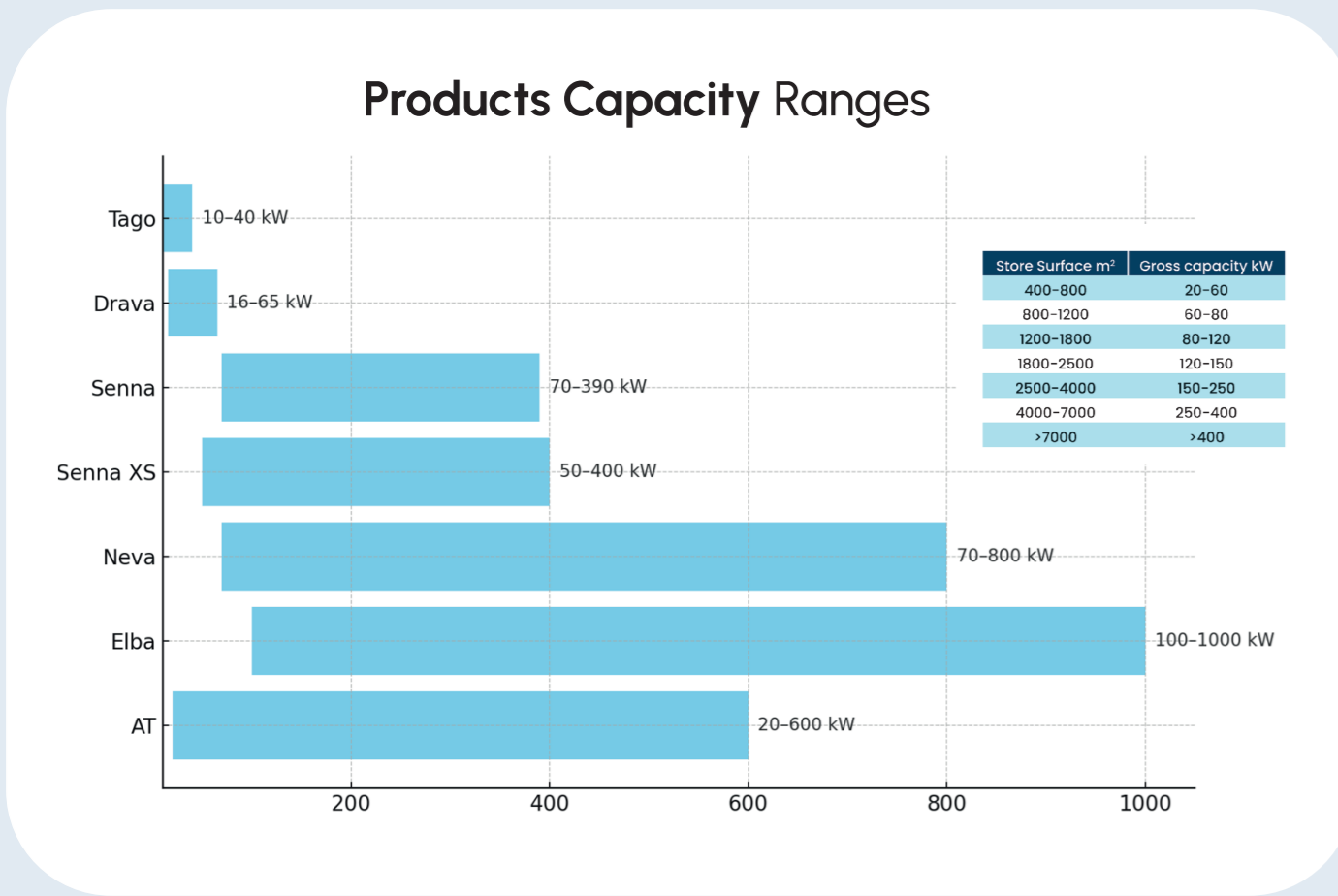
- Heating capacity from 45 kW to 335 kW
- Cooling capacity from 36 kW to 290 kW



Heat pumps

Your Partner in Innovation

Enex Technologies stands at the forefront of this challenge, offering **cutting-edge** cooling technologies that are both **effective and environmentally friendly**.



A Commitment to Green Technology

With Enex Technologies, embrace a partnership that values innovation and environmental responsibility, paving the way for a greener, more sustainable future in data center operations.



Enex Technologies
ALL-IN-ONE SOLUTIONS

Innovative and efficient solutions for RETAIL APPLICATIONS

enex technologies.com
info@enex technologies.com



enex technologies
cooling and heating naturally

Your partner for success

Service Enex Technologies



High level expertise and customer support on Enex Technologies equipment across Europe

- On-site or remote technical support
- Management of routine and preventive maintenance
- Technical trainings for customer and installers
- Remote monitoring
- Spare parts management

Natural Refrigerants for Sustainable Retail

Boost store efficiency and sustainability with Enex technologies all-in-one solutions

Powered by natural, low-impact refrigerants. Designed for modern supermarkets, our solutions deliver powerful cooling, lower energy costs, and full environmental compliance, reducing emissions while improving performance.